

**INTEARA**  
■ design studio

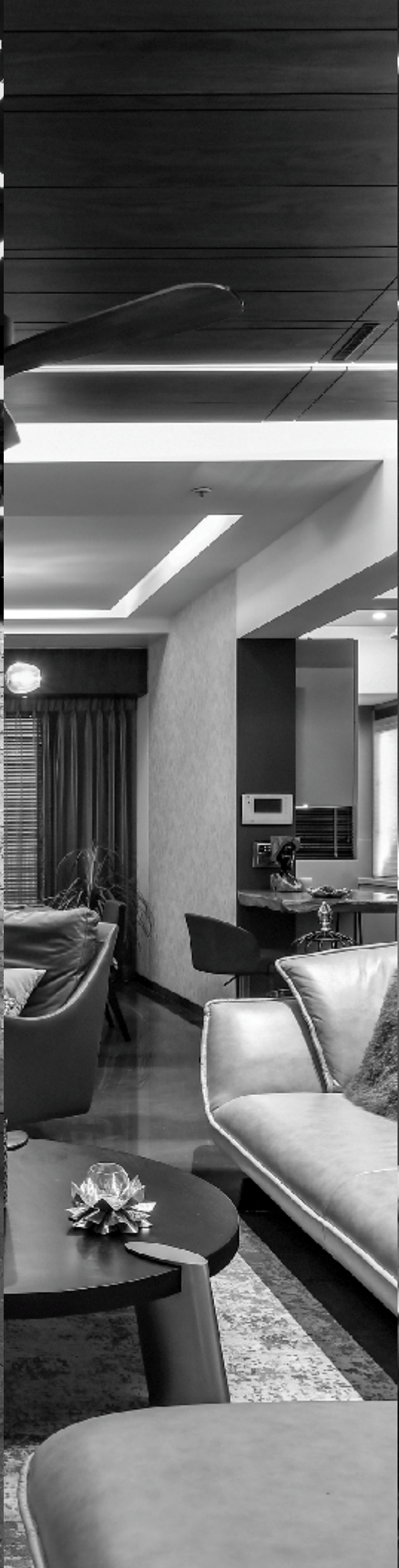
022 2081 9191  
9870 336 159

[design@inteara.com](mailto:design@inteara.com)

411 Centrum Plot No C3  
Mulund Check Naka  
Wagale Estate  
Thane-400604 India



ONLY  
GREAT DESIGN  
IS VISIBLE



DESIGN LOOKS EASY  
BECAUSE  
THE DESIGNER  
HAS SPENT YEARS  
PERFECTING HIS ART





## INTEARA

■ design studio

Inteara was incorporated with the passion to create places that are easy to live in and pleasant to look at. Known for their minimalist and contemporary style, Inteara has mastered the art of blending various forms and textures creating innovative design forms.

Well appreciated among the fraternity and popular with their clients, Inteara today is a sought-after design studio for the discerning and the connoisseurs of craft. Having an impressive body of work that is cherished by clients, Inteara is one of the hottest studios that provide space and experience design to some of the biggest corporates and personalities in India.



## SANJAY BOBADE

Admired as one of the most creative designers in India today.

Sanjay has trained under some of the best designers during his formative years while developing valuable knacks of blending human values in brick, mortar and wood.

Sanjay's eye for detail has won him multiple laurels at competitions and gained him a vast number of clients in various industries like residential, commercial, retail, corporate, education and industrial.

## ALL THAT WE CAN DO FOR YOU

You have decided to upgrade your surroundings. That is the first step towards fulfillment of a dream you always nurtured. Inteara would be more than elated to start at this stage.

This is where all the inspiration begins. Starting at the seed stage will give your project a kickstart with the entire foundation in the right place. We begin with giving you a head start on what are different types and space designs you could choose for your premises.

### Client assessment

To help you with the best design we first work on understanding you. We start with a casual chat while listing your likes and dislikes. Getting to know you personally gives us a deep insight into what will be the right design genre for you.

### Designing

On the basis of the study of your personality and likes we begin by creating various mood boards for you to choose the perfect approach towards space utility and design techniques.

### Referencing

Once we have grasped your inclination we start to tailor make designs. Our designers create floor plans and help you understand how everything will work in terms of space management.

### Budgeting

After the plan is approved by you we start introducing you to various materials and forms from which the desired look and feel could be achieved. We do this along with a rough estimation so that you can take a call on your budgets.

### Detailing

On the basis of your budget we now start assessment of colours, textures, ergonomics and other details. We start identifying sources and procure samples for material and other decorative objects.

### Negotiations

Once all the material is shortlisted our procurement team begins negotiating with suppliers, contractors and craftsmen keeping you in the loop for utmost transparency.

### Work Scheduling

The project team simultaneously prepares a timeline and scheduling of the entire project. For timely execution of each phase of the project we apply stringent work management procedures and operational techniques.

### Supervision

We supervise every detail to the satisfaction of our client. We work as task masters in ensuring the project exceeds expectations and all standard operating procedures are followed with utmost care.

### After Sales

We task upon ourselves the responsibility to ensure that the premises is fully functional and in good shape. We ensure that we give you continued support to the peak of your satisfaction.

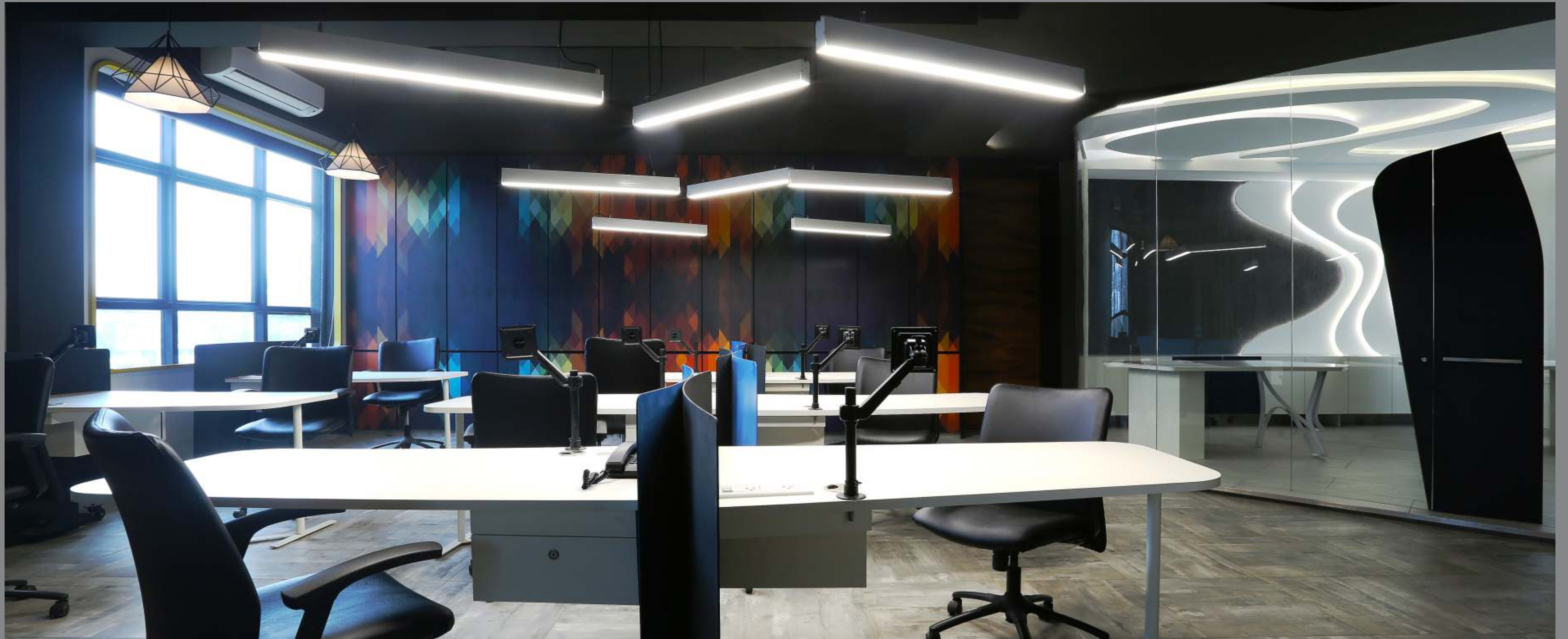


## Chetra India

Location: Ambarnath MIDC

Area: 3600 sqft

Unusual blending of various material creates a visual blast in this extraordinary office. A quirky touch of a cable car inspired meeting box is a welcoming piece. A selective splash of colors against a neutral background nudges us into the future.



## Chetra India

Rope lines create a sense of division while also making the place look enormous and spacious



## Soofi Enterprises

Location: Mumbai  
Area: 2000 sqft

Elegance is a benchmark of this highly sophisticated workplace. Designed to accommodate and inspire, the minimalist approach creates a sense of ampler space.



## Soofi Enterprises

Brightly coloured accentuation in key area builds up a unique character for each space. Curated furniture pieces and accessories highlight the design grammar.





## MCM Office

Location: Thane

Area: 4000 sqft

Welcome to an office where employees and guests soak into complete mental comfort with remarkable informality. With a unique blend of forms and materials that sets the mood, MCM is more than just a workspace. Every inch is thoughtfully crafted to translate the vision of the company. An ethereal confluence of metal, wood and stone brings about a rustic calm.



## MCM Office

Where comfort and efficiency converge seamlessly to create a welcoming atmosphere.

## Hyva India

Location: Navi Mumbai, MIDC

Area: 12000 sqft

A vivid touch of sophistication raised the reckoning for an industrial unit of one of the world's biggest hydraulics company. Creative use of material to break the monotony is one of the many arresting surprises from our design team.





## Hyva India

Schemed with contemporary sobriety, the Hyva office is a well thought piece of architecture with complete employee exhilaration in mind.



## Deepak Optic Studio

Location: Andheri, Mumbai

Area: 1200 sqft

An optical showroom can be a treat for the eyes. Envisioned like an art studio, the space is sparsely dotted by minimalistic pieces. Enhanced by natural material in neutral colours create a sense of expanse across the studio.





### Deepak Optic Studio

The brightly coloured scooter strategically placed takes the studio miles ahead of the competition.





## Mastermind Cycle Studio

Location: Mulund, Mumbai

Area: 1800 sqft

People say, The Greatest Wealth one has is Health. Mastermind cycles, a bicycle studio, is one such project which is extra ordinary in itself because of the use of cycle parts in all aspects of the studio's design features.

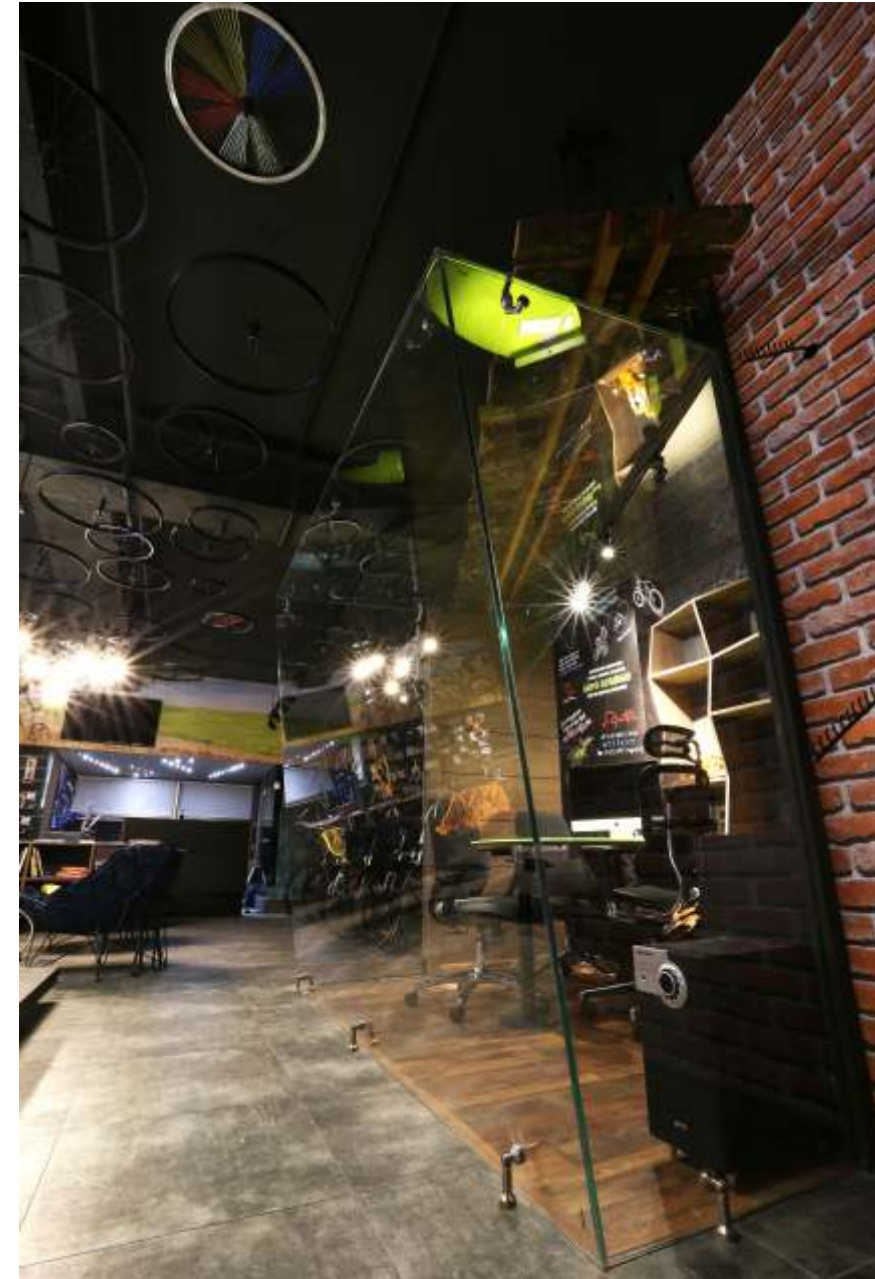
We have inspiring cycling images & quotes on the passage wall welcoming one towards the studio.



## Mastermind Cycle Studio

Stepping in is like entering the world of cycles, right from the entrance door which has a bicycle handle to open it from one end and at the other is the gear and chain mechanism. Moving ahead what catches our eye is a wooden suspended bridge displaying bicycles and a group of those parked on a gravelled rough landscape gives us a thrill of adventure in cycling.

Overall the visit to this studio surely leaves one mesmerized as it begins with cycles and ends with it making one fall in love with this sport.





## Sachin Patil's Resident

Location: Thane

Area: 2200 sqft.

Stone is cold. But when crafted to perfection it takes hottest of art forms. A perfect blend of stone and wood has the ability to create a sense of ultimate luxury.



## Sachin Patil's Resident

Contemporized with LED streaks and well thought out lighting this residence speaks highly about those who dwell here.





## Thakkar's Residents

Location: Mulund, Mumbai

Area: 2200 sqft.

Modernism is defined by how one breaks the mould while replanting traces of past. The elegant blend of wood and rustic motifs add multiple layers of lavishness and luxury to the apartment. The complete drift from usual geometrical shapes makes for a pleasant visual treat. The ingenious use of greys converts the apartment into a warm and welcoming abode.

**Thakkar's Residents** A statement of class carved out of material and vivid forms.



## Kamat Farmhouse

Location: Badlapur

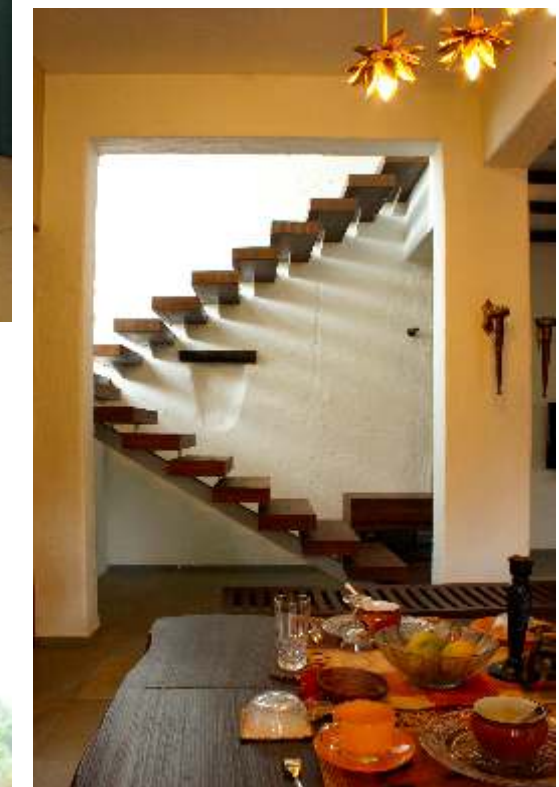
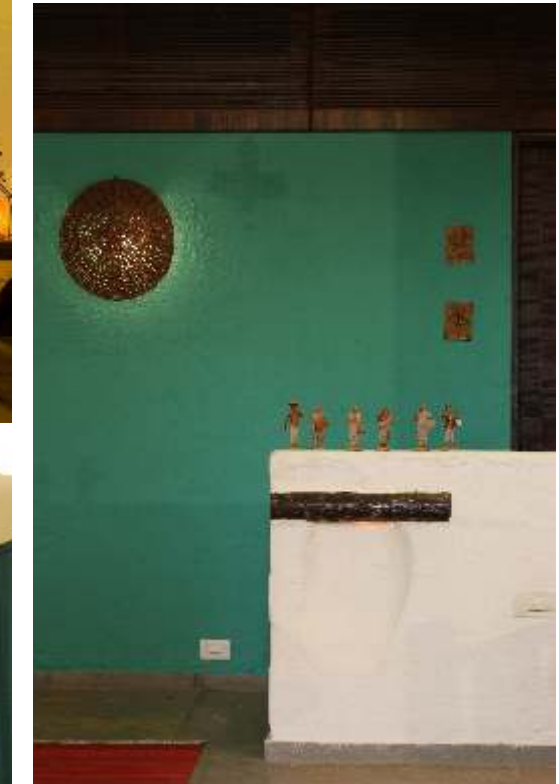
Area: Builtup – 4000 sqft

Landscape – 50000 sqft

Luxury in the lap of nature is a rare occurrence. While staying comfortable, you have all the earthy touches strategically strewn. Locally sourced material crafted in colonial designs accentuate the sense of vacationing.



**Kamat Farmhouse** Connecting with nature with earthy textures yet keeping it most comfortable and cosy.









Our work for Chetra gets appreciated in Family Interiors magazine. A deserved validation for great work.



## ACHIEVEMENTS



An article lauding our work for Zee Kids featured in Society Interiors. Another feather in our cap.



Recipient of the Family Interiors Award for Architecture and Design by MRP Publications.